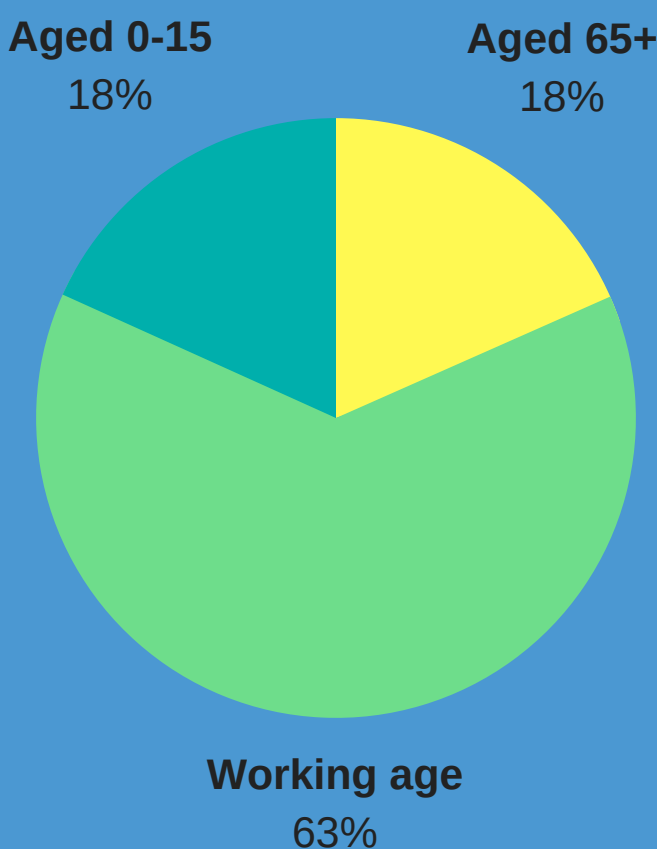


ABINGDON-ON-THAMES



The historic market town Abingdon-on-Thames is the largest and the oldest continuously occupied town in the Vale of White Horse District Council area.

There are 34,030 people currently residing in the town.

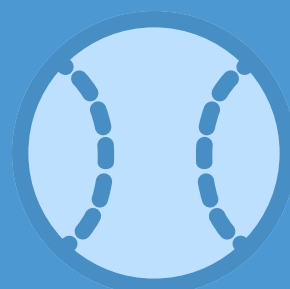


Abingdon-on-Thames is one of the main shopping and commercial centres within the district. The Abbey shopping centre offers a combination of national retailers and small independent traders.



In town, a good range of services such as banks, cafés and restaurants are provided, and Fairacres Retail Park provides a mix of shops beside the A34.

Tilsley Park boasts several sports pitches and a large athletics track. The Vale of White Horse Leisure and Tennis Centre is a national centre of excellence for tennis.



The River Thames has open meadows beside it and the Abbey Gardens are well used for informal recreation by locals and visitors to the town.

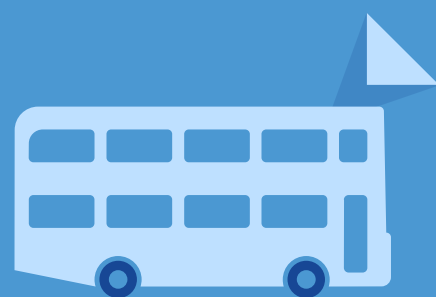
ABINGDON-ON-THAMES

The town has a museum, a library, a community hospital, seven secondary schools and a college of further education.

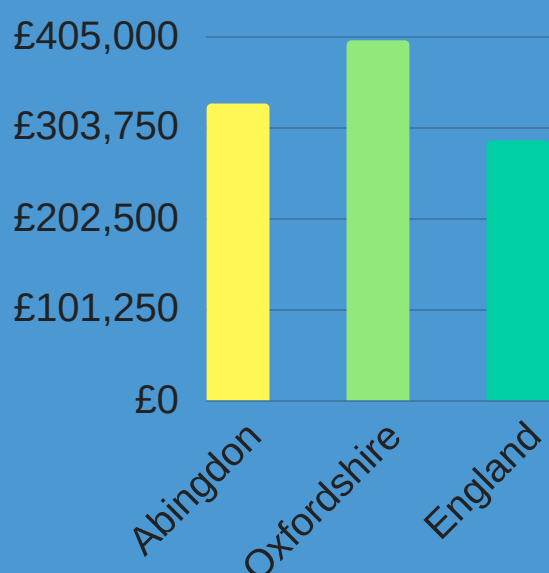


All council car parks offer free parking for two hours. There are three temporary mooring sites for boaters, and Abingdon Bridge Marine Ltd. has an array of vessels for hire.

The town has two junctions to the A34 and is less than 10 miles away from Didcot Parkway train station. Buses run every 20 minutes to Oxford and every hour to Harwell, Didcot, Wantage, Grove, Milton Park and Culham.



Abingdon-on-Thames is in close proximity to the city of Oxford, which is home to 38 colleges and Oxford University - one of the leading universities in the world. Oxfordshire is home to a highly skilled workforce with an above average number of graduates.



The average house price in Abingdon-on-Thames is £330,271, lower than that of Oxfordshire, which sits at £400,615.

The town is home to 3,758 businesses (sourced from the Mint UK database). The largest business sector is professional, scientific and technical services.

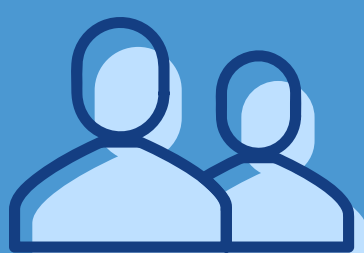


ABINGDON-ON-THAMES

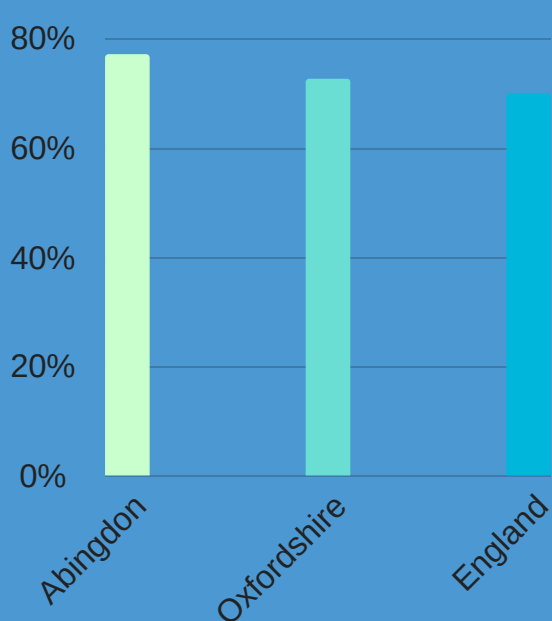


Abingdon-on-Thames benefits from a strong culture of support for growing businesses. The chamber of commerce holds regular networking meetings and events and there are various business support groups in the town.

Abingdon-on-Thames is home to a number of strategic employment sites, including Abingdon Science Park and Abingdon Business Park.

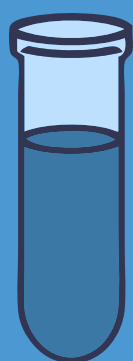


3.20 hectares of employment land has been identified for future employment and business growth within the town.



77.1% of all residents aged 16-74 are economically active, compared to 72.6% in Oxfordshire. The top three sectors people who live in Abingdon work in are retail, education, professional and scientific and technical.

There is a large cluster of science companies located in and around Abingdon-on-Thames, particularly in Abingdon Science Park and in the neighbouring Milton Park and Culham Science Centre.



Milton Park and Culham Science Centre form part of Science Vale UK, a global hot spot for innovation. Benefiting from a number of enterprise zones, the area attracts significant investment in science and technology businesses.

If you are thinking of locating business in the Vale of White Horse district and would like some further information, please contact the Economic Development team via email: economic.development@southandvale.gov.uk